

---

## **AN\_How to export and import VMS configuration**

**Application Notes**

**Version <1.1>**



Technical Support Team

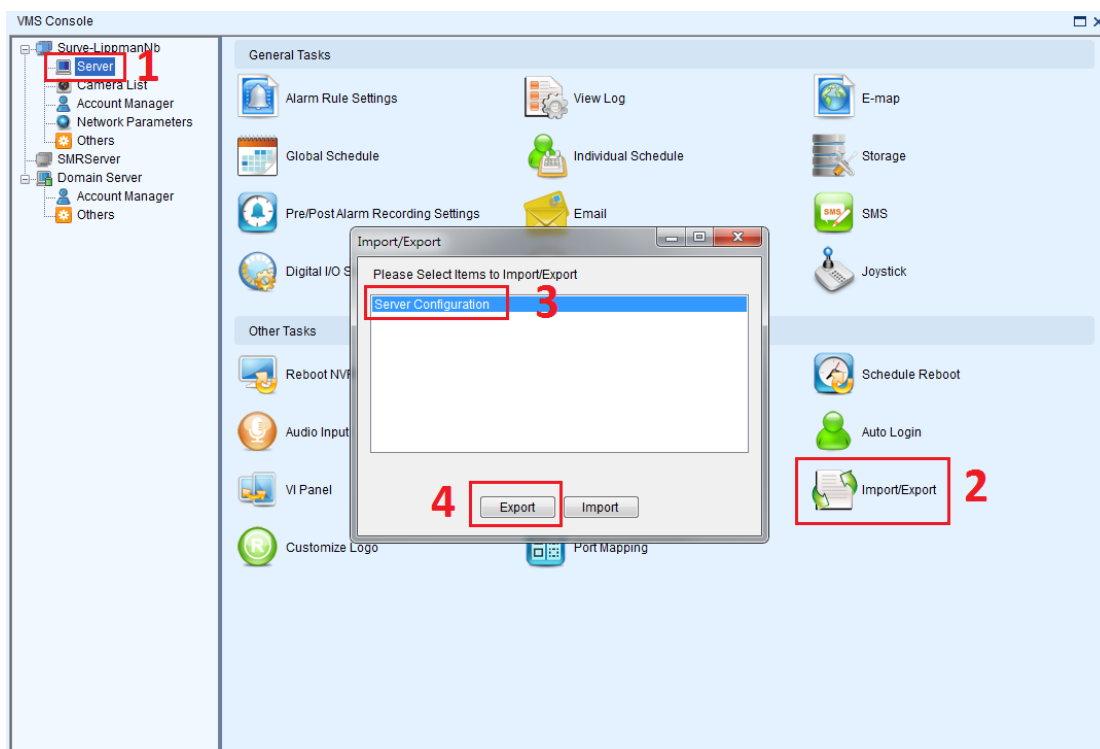
## Preface

If customer wants to reinstall the VMS and keep the previous setting, customer need to export the configuration setting before uninstalling VMS and import the configuration after reinstalling VMS software.

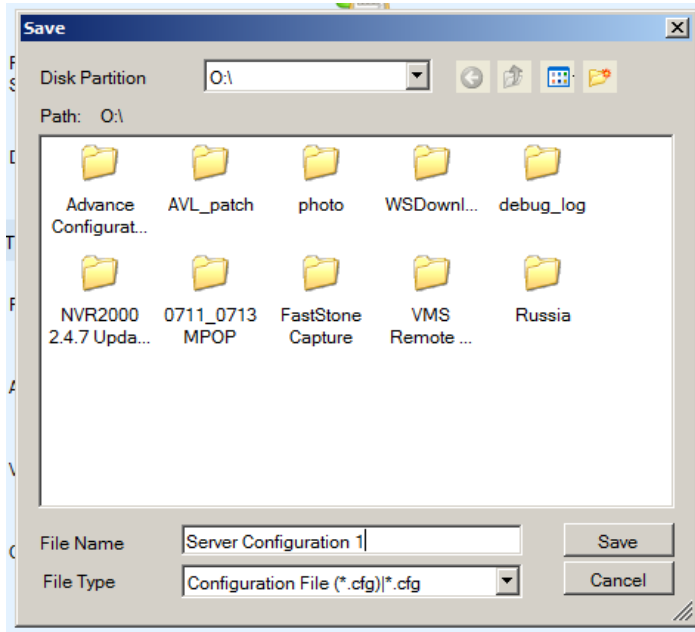
### Export setting

#### A.1 Export the Server Configuration

1. Click **Server** in the setup console.
2. Click **Import/Export** icon.
3. Select **Server Configuration**.
4. Click **Export** button.

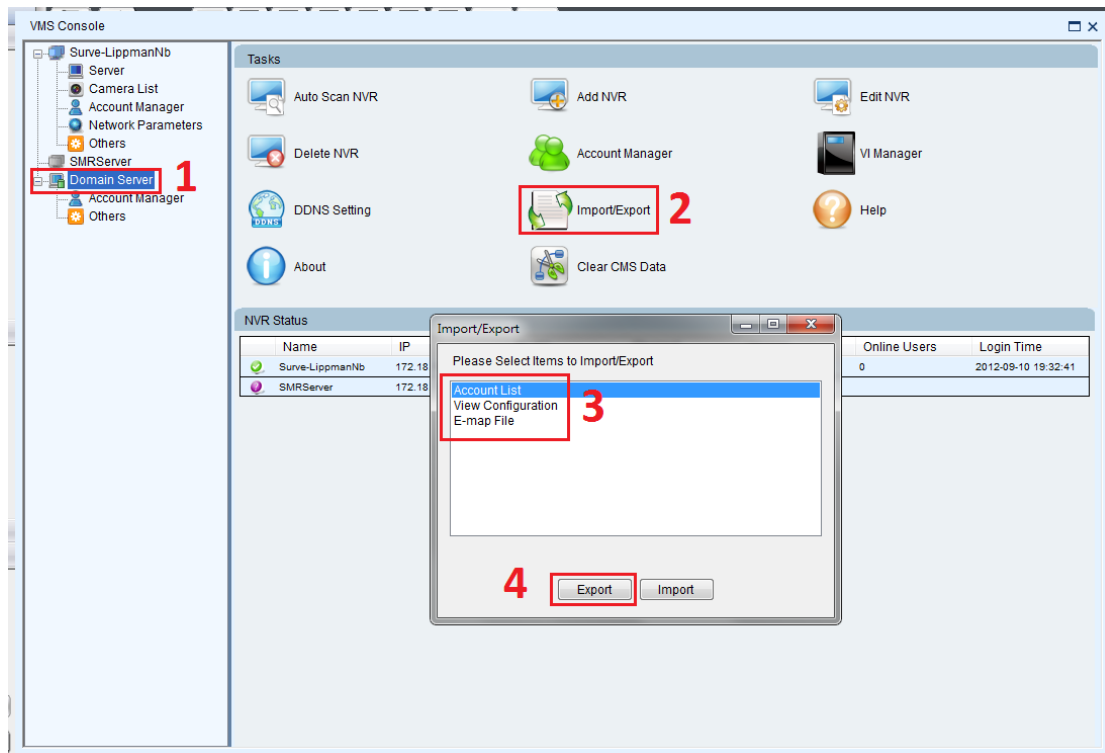


5. Select the target folder on the USB drive and click **Save** button.

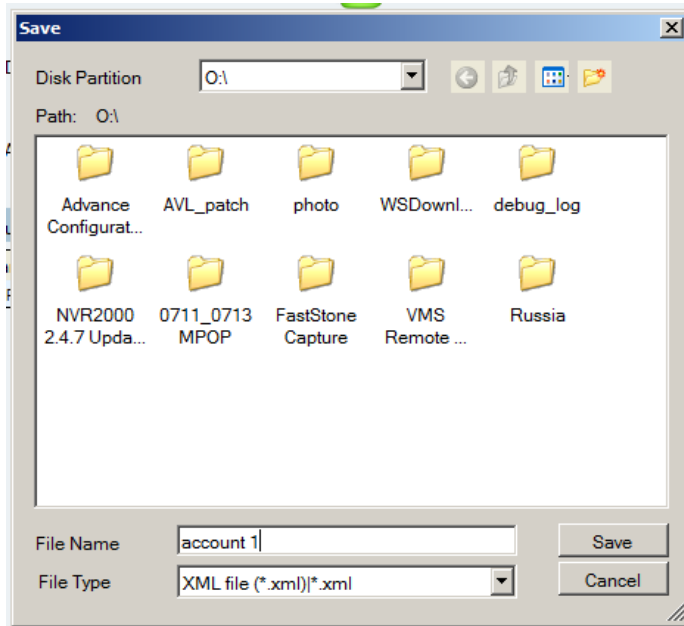


## A.2 Export the Account List/View Configuration/E-map File

1. Click **Domain Server** in the setup console.
2. Click **Import/Export** icon.
3. Select **Account List**.
4. Click **Export** button.



5. Select the target folder on the USB drive and click **Save** button.

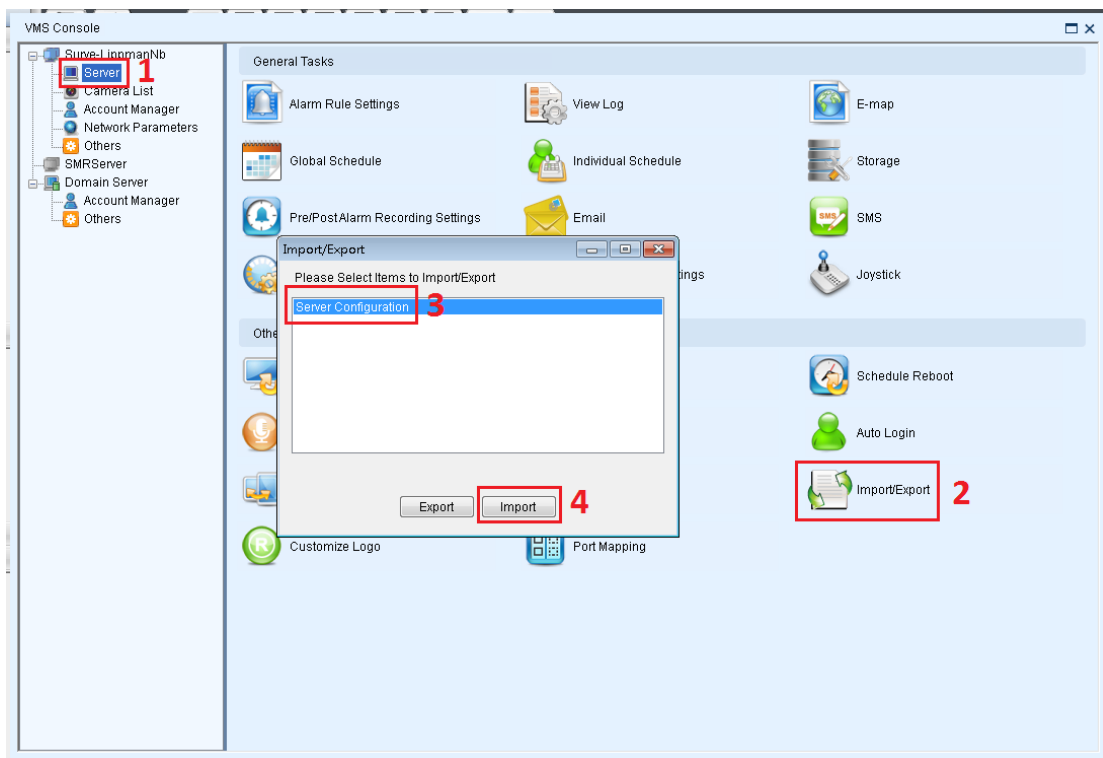


6. Repeat step 3 to 5 for **View Configuration** and **E-map** File.

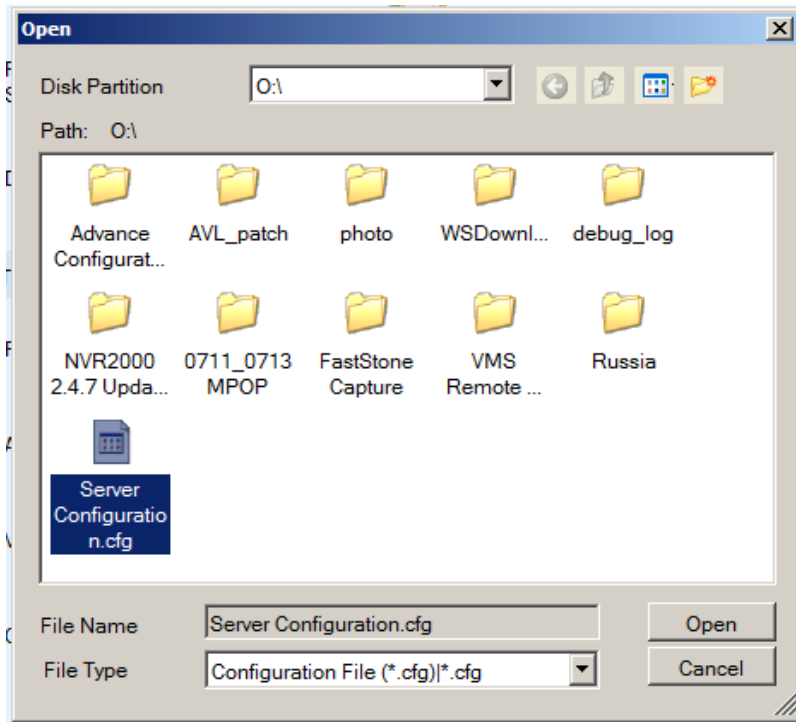
### Import setting

A.3 Import the Server Configuration

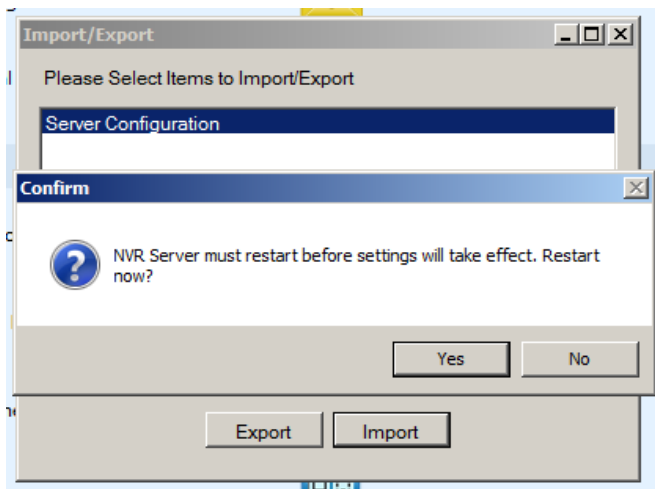
1. Click **Server** in the setup console.
2. Click **Import/Export** icon.
3. Select **Server Configuration**.
4. Click **Import** button.



5. Select exported **Server Configuration** file to import.

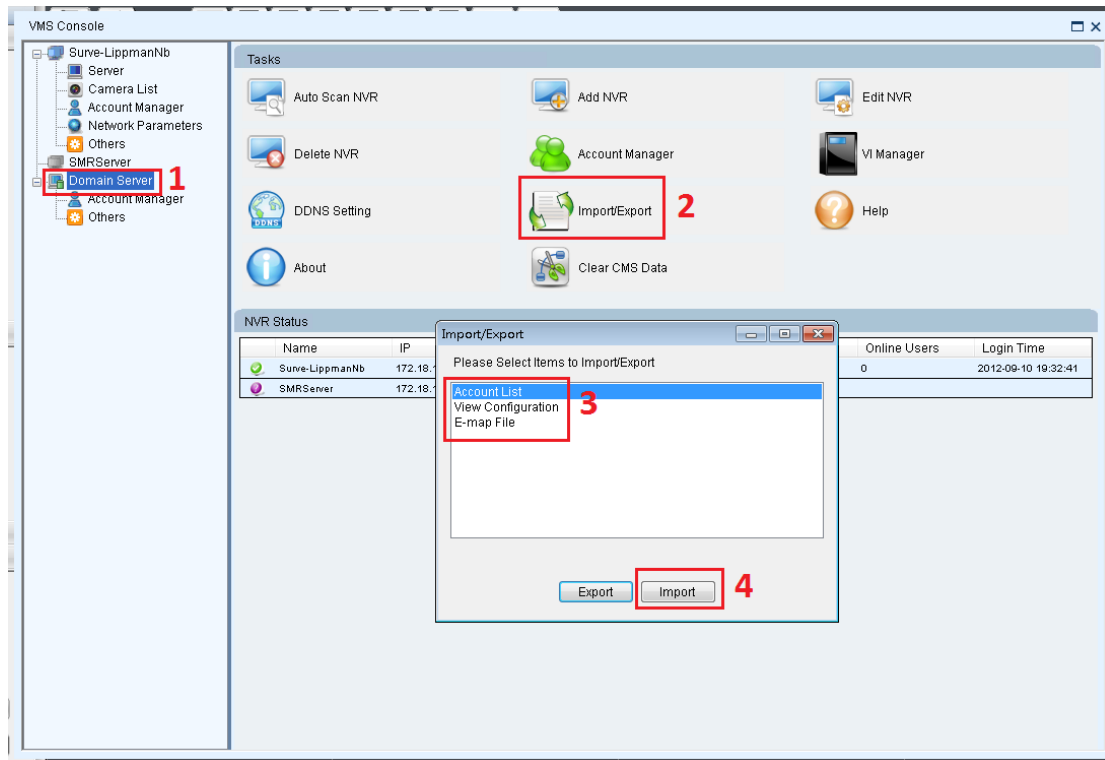


6. After importing the **Server Configuration** file, click **OK** button to restart SMR.

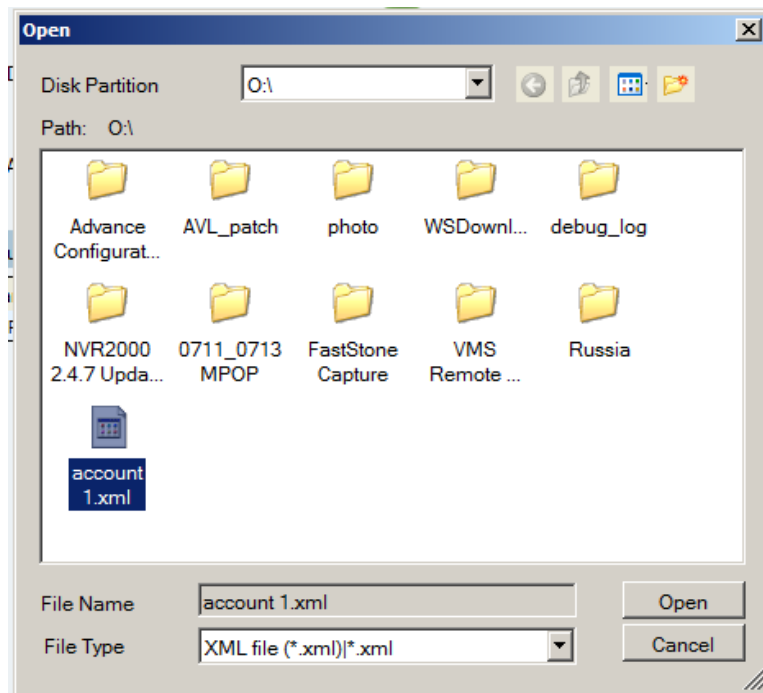


A.4 Import the Account List/View Configuration/E-map File

1. Click **Domain Server** in the setup console.
2. Click **Import/Export** icon.
3. Select **Account List**.
4. Click **Import** button.



5. Select exported **Account List** file to import.



6. Repeat step 3 to 5 for **View Configuration** and **E-map File**.